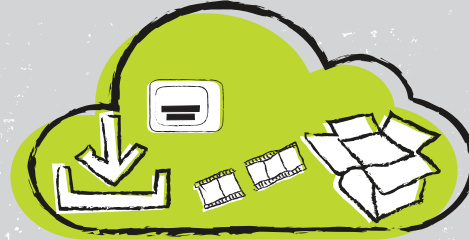


EDGEWARE PRODUCT PORTFOLIO

MGMT & CONTROL	TV System Manager
	TV Analytics
	Multitenancy
ORIGIN	TV Subtitling
	TV Content Capture
	TV Repackager
	TV Ad Insertion
	TV Watermarker
CDN	CDN Selector
	TV Delivery
	TV Director
	TV Server 4020/4080
	Fast Channel Change



Edgware Cloud Service

EDGEWARE TECHNOLOGY AS A SERVICE

The Edgware Cloud Service allows you to benefit from Edgware's award-winning content processing technology with the additional benefit that you don't have to run and operate the system yourself - Edgware will do it for you. With the Edgware Cloud Service you will get both the technology expertise and the cloud host in one entity which gives you a short and simple approach to product updates as well as cloud operation, eliminating complex and time consuming third party arrangements.

WHAT IT DOES

Edgware Cloud Service includes the functionality in the products TV Content Capture with Cavena OCR Subtitling feature, Ad Enabler and TV Repackager.

TV Content Capture ingests and segments incoming streams from the encoders. It also integrates with Cavena-based OCR subtitling.

Ad Enabler detects SCTE-35 ad markers and performs frame-accurate segmentation which is key for a glitch-free personalized ad insertion.

TV Repackager then repackages the content into any of the formats requested by the client; HLS, DASH or MSS as well as integrates with your DRM system.

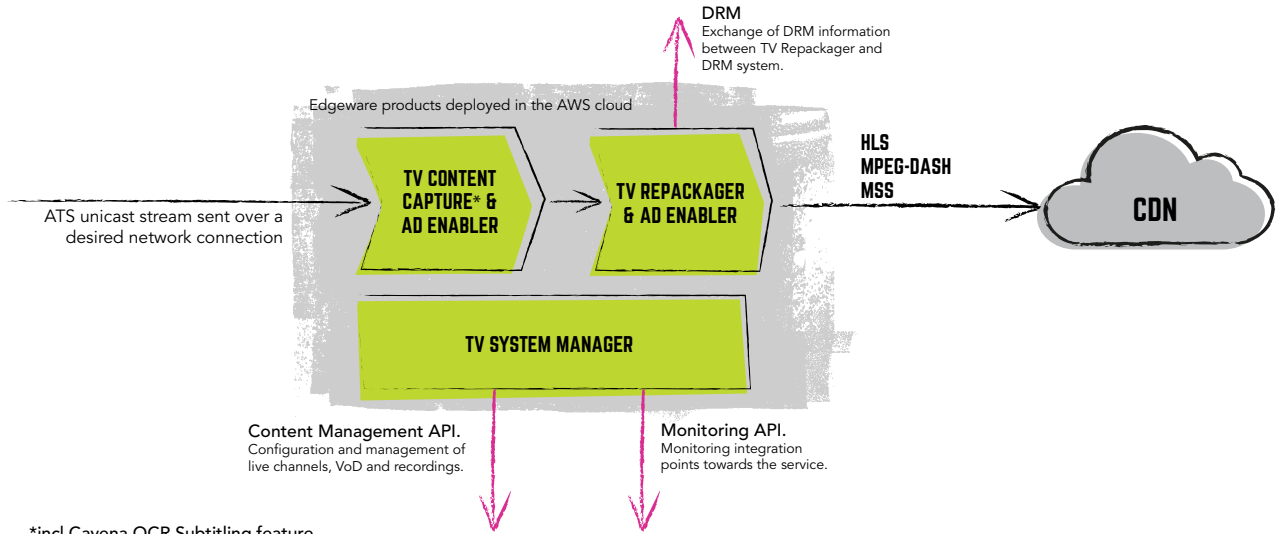
Edgware Cloud Service is deployed on the AWS cloud platform.

KEY FEATURES & BENEFITS

- ✓ Benefit from Edgware's award winning content processing technology such as frame-accurate segmentation and extensive DASH support
- ✓ Provides one entity for both technology expertise and system operation avoiding complex arrangements with multiple stakeholders involved
- ✓ Benefit from specialist competence in TV content processing
- ✓ Close to technology and product experts with the possibility to get continuous insight into product updates and enter key requirements
- ✓ Avoids the hassle of handling product upgrades and system scalability issues

HOW IT WORKS

1. Incoming ATS unicast stream is ingested and segmented by the TV Content Capture.
2. Ad Enabler detects SCTE-35 ad markers.
3. DRM information is exchanged between TV Repackager and DRM system.
4. On-the-fly repackaging is made by the TV Repackager, repackaging into any ABR format requested by the client; HLS, MPEG-DASH and MSS.
5. TV System Manager delivers APIs for internal monitoring and configuration and management of content.



SERVICE SPECIFICATIONS FOR THE EDGEWARE CLOUD SERVICE

AVAILABILITY
Standard - 99.5% uptime/month
High - 99.99% uptime/month
API
Monitoring Rest API - monitoring integration points towards the service
Content Management Rest API - configuration and management of live channels, VoD and recordings
NETWORK INTEGRATION OPTIONS
AWS Direct connect
AWS VPN
Public Internet
Further options can be considered on request

INPUT
RTP + FEC
Zixi
See details in TV Content Capture data sheet
OUTPUT
See details in TV Repackager data sheet

FOR MORE INFO ON RELATED PRODUCTS, PLEASE SEE:

- [TV Content Capture Data Sheet](#)
- [TV Repackager Data Sheet](#)
- [Ad Enabler Data Sheet](#)